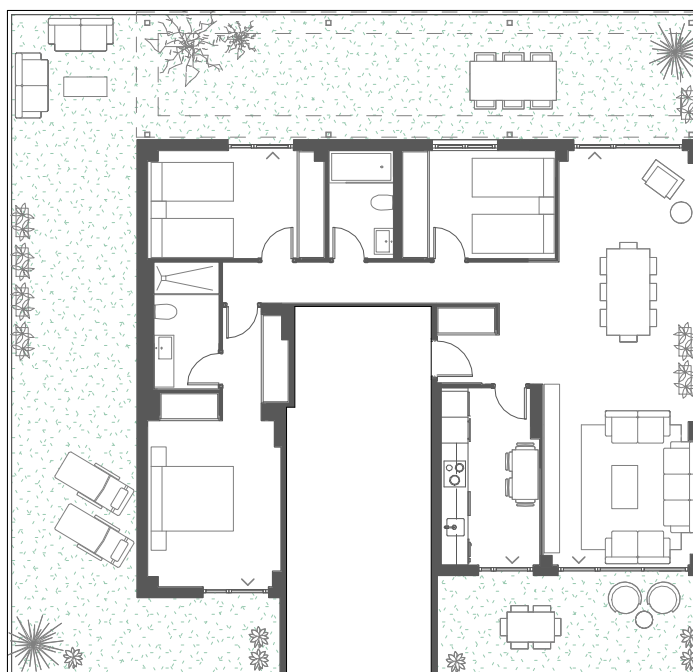


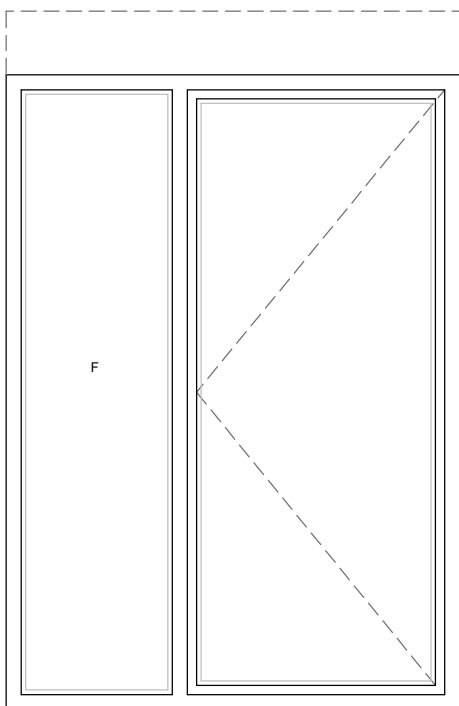
homes  
**AQUA moliner**



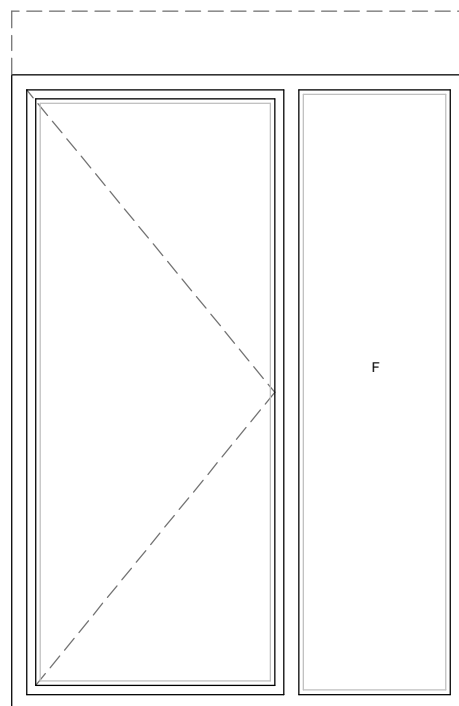
AQUA HOMES moliner  
 T08\_E06-ÁTICO A



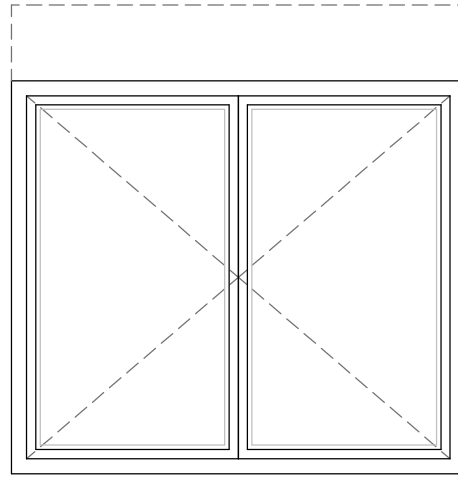
| SUPERFICIE ÚTIL T08 |                       |
|---------------------|-----------------------|
| RECIBIDOR           | 5,40 m <sup>2</sup>   |
| COCINA              | 9,45 m <sup>2</sup>   |
| SALÓN               | 32,75 m <sup>2</sup>  |
| DISTRIBUIDOR        | 6,00 m <sup>2</sup>   |
| BAÑO 01             | 4,50 m <sup>2</sup>   |
| BAÑO 02             | 3,80 m <sup>2</sup>   |
| DORMITORIO 01       | 16,30 m <sup>2</sup>  |
| DORMITORIO 02       | 10,00 m <sup>2</sup>  |
| DORMITORIO 03       | 8,70 m <sup>2</sup>   |
|                     | 96,90 m <sup>2</sup>  |
| TERRAZA 01          | 14,00 m <sup>2</sup>  |
| TERRAZA 02          | 86,00 m <sup>2</sup>  |
|                     | 100,00 m <sup>2</sup> |
| TOTAL               | 196,90 m <sup>2</sup> |



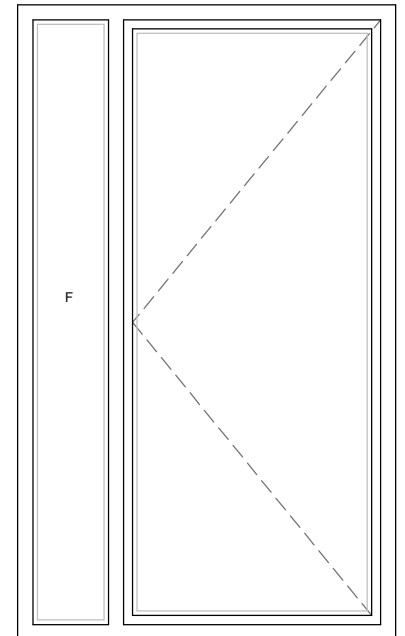
**DORMITORIO 01**  
ABATIBLE + FIJO  
PERSIANA



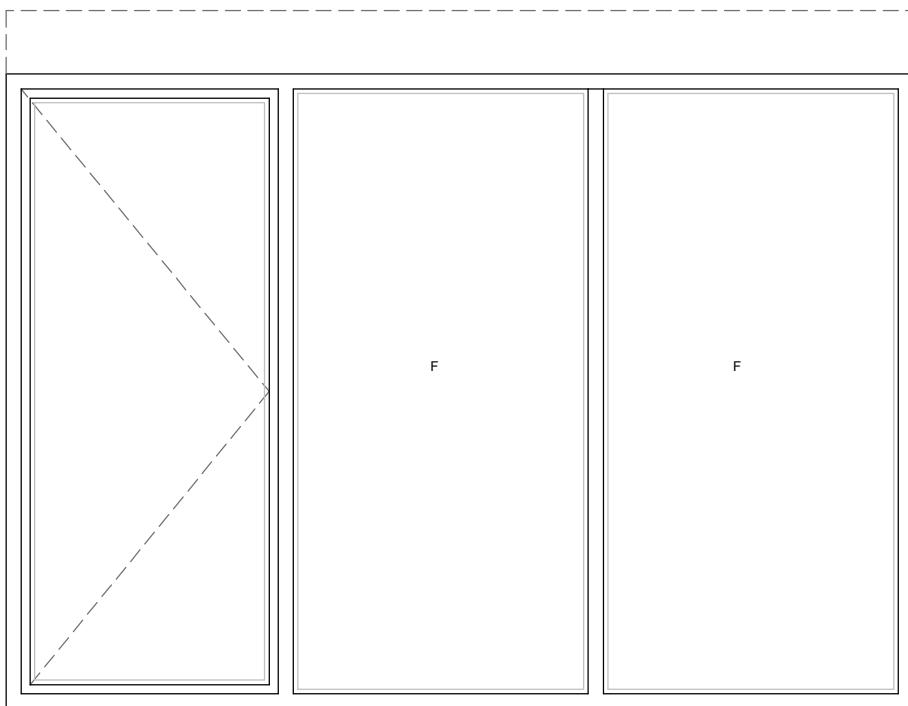
**DORMITORIO 02**  
ABATIBLE + FIJO  
PERSIANA



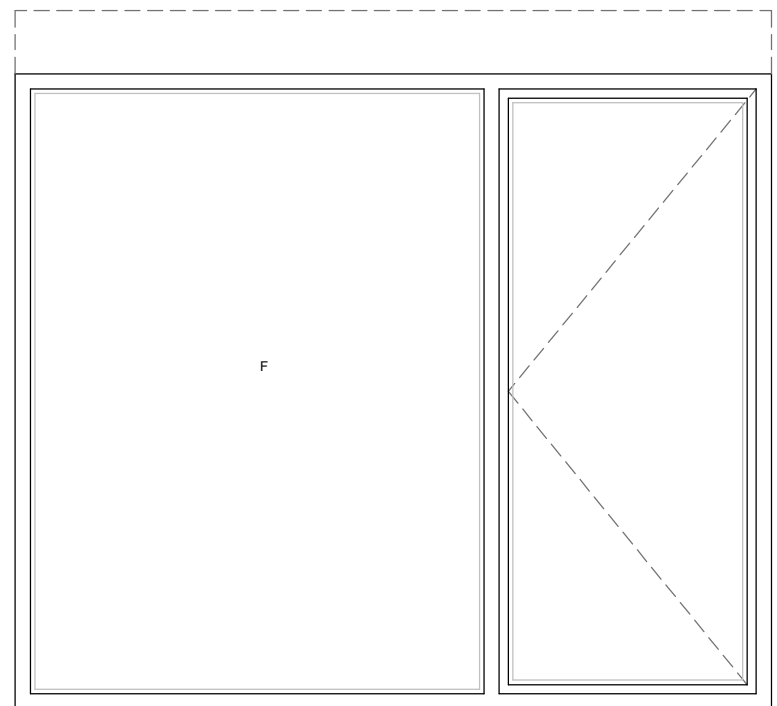
**DORMITORIO 03**  
ABATIBLE + ABATIBLE  
PERSIANA



**COCINA**  
ABATIBLE + FIJO



**SALÓN**  
ABATIBLE + FIJO  
PERSIANA



**SALÓN**  
ABATIBLE + FIJO  
PERSIANA



**AQUA HOMES moliner**  
T08\_E06-ÁTICO A

